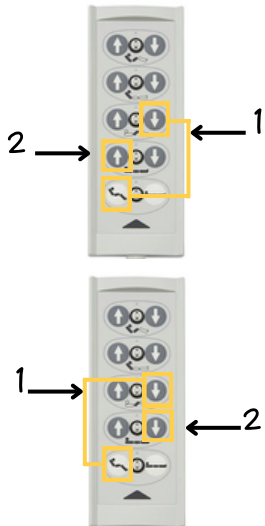


Handset - HL 7

! Before selecting the mode, the lying surface must be moved horizontally

Applies for the beds Regia, Regia Partner, Lenus, Libra, Libra Partner, Elvido and Venta

Lowest position



Saving the position

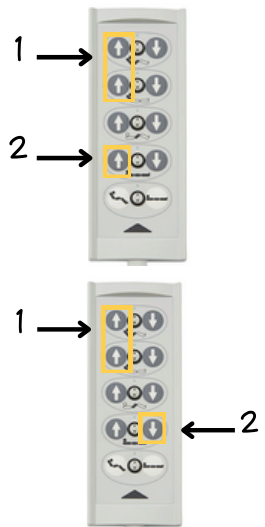
- Move the bed to the desired lowest position
- Press the button combination (1) three times in succession at the same time
- Press the button (2) immediately afterwards
- The new position is confirmed by a short acoustic signal

Resetting to factory settings

- Press the button combination (1) three times in succession at the same time
- Press the button (2) immediately afterwards
- The factory setting is confirmed by a short acoustic signal



Stopover



Saving the position

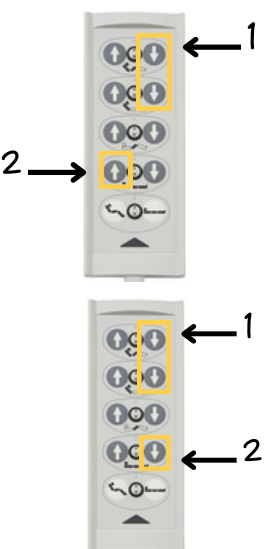
- Move the bed to the desired intermediate position
- Press the button combination (1) three times in succession at the same time
- Press the button (2) immediately afterwards
- The new position is confirmed by a short acoustic signal

Resetting to factory settings

- Press the button combination (1) three times in succession at the same time
- Immediately afterwards, press the button (2) for 5 seconds until the acoustic signal stops



Highest Position



Saving the position

- Move the bed to the desired highest position
- Press the button combination (1) three times in succession at the same time
- Press the button (2) immediately afterwards
- The new position is confirmed by a short acoustic signal

Resetting to factory settings

- Press the button combination (1) three times in succession at the same time
- Press the button (2) immediately afterwards
- The factory setting is confirmed by a short acoustic signal

