

2022

Medical Devices


for nursing and homecare use

- Active & Static Mattress Systems



novacare 
www.novacare.org

ASX digital 5 inch

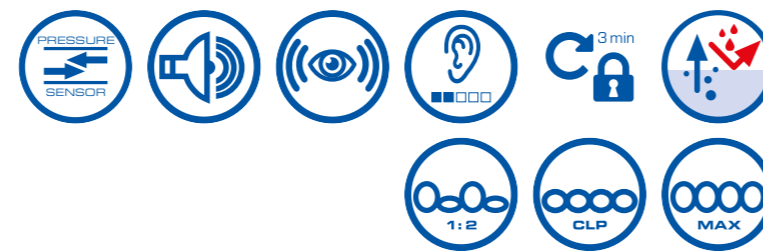
TECHNICAL SPECIFICATIONS	
	<p>ITEM NO.: 997508K 88</p> <p>CONTROL UNIT: Measurements: 30 x 18 x 12 cm Weight: 2,7 kg 1 Membrane compressor, digital control with pressure sensor, alternating pressure cycle (12 min), static mode (CLP), touch pad panel, low pressure alarm (visual and audible), automatic keylock after 3 min., backup function</p> <p>MATTRESS OVERLAY: Measurements: 200 x 88 x 13 cm (inflated, without base mattress) Weight: 5,4 kg (without base mattress) 18 cells, 3 static head cells, non-bending connecting tubes (incl. transportation safety lock), CPR emergency ventilation</p> <p>MATERIALS: Cells: high-quality nylon PU cell material Cover: PES polyurethane cover with all-round zip, bi-elastic, highly breathable, slip-retardant</p>
<p>PRESSURE ULCER GRADE: ● I ● II ● III ○ IV</p> <p>MAX. PATIENT WEIGHT: 160 KG</p>	<p>ALARM FUNCTIONS:</p> <ul style="list-style-type: none"> low pressure and cycle change alarms (visual and audible) power failure alarm (visual and audible)

The ASX digital 5 inch mattress system is suitable for the prevention and treatment of pressure ulcers up to grade III according to EPUAP.

The control unit of the ASX digital features digital pressure sensor technology thus ensuring a silent operation and a long product life. The compressors automatically switch off when the pre-set system pressure is reached and only re-activate when a cycle change occurs or to adjust the system pressure if necessary. The ASX 5 inch digital mattress overlay features nylon / PU cells, eight of which are micro-perforated. The cover is bi-elastic, PU-coated and has an all-round zip. In addition, a double layer base permits the insertion of a safety mattress (optional) of up to 5 cm. This feature protects the existing mattress from soiling.

PRODUCT HIGHLIGHTS:

- touch pad panel with automatic keylock
- care function
- long service intervals
- low noise level



ASX digital 6 inch

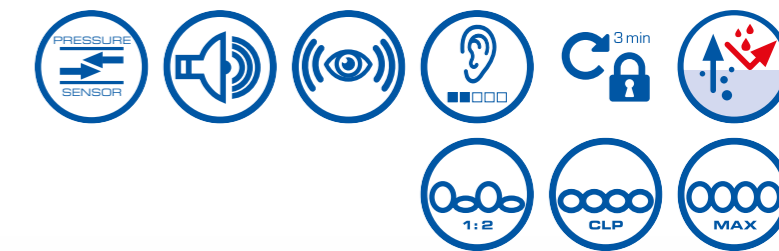
TECHNICAL SPECIFICATIONS	
	<p>ITEM NO.: 997108K 88</p> <p>CONTROL UNIT: Measurements: 30 x 18 x 12 cm Weight: 2,7 kg 1 Membrane compressor, digital control with pressure sensor, alternating pressure cycle (12 min), static mode (CLP), touch pad panel, automatic keylock after 3 min., backup function</p> <p>MATTRESS OVERLAY: Measurements: 200 x 88 x 15,5 cm (inflated, without base mattress) Weight: 7,2 kg 18 cells (Ø approx. 15 cm), non-bending connecting tubes (incl. transportation safety lock), CPR emergency ventilation, 5 heel cells with quick release connectors and self-closing valves for creating pressure free zones in this sensitive area</p> <p>MATERIAL: Cells: high-quality nylon PU cell material Cover: PES polyurethane cover with all-round zip, bi-elastic, highly breathable, slip-retardant</p>
<p>PRESSURE ULCER GRADE: ● I ● II ● III ● IV</p> <p>MAX. PATIENT WEIGHT: 200 KG</p>	<p>ALARM FUNCTIONS:</p> <ul style="list-style-type: none"> low pressure and cycle change alarms (visual and audible) power failure alarm (visual and audible)

The ASX digital 6 inch mattress system is suitable for the prevention and treatment of pressure ulcers up to grade IV according to EPUAP.

The control unit of the ASX digital features digital pressure sensor technology thus ensuring a silent operation and a long product life. The ASX digital mattress overlay features 18 nylon / PU cells. Three head-cells are static. The bi-elastic cover is breathable, PUcoated and has an all-round zip. In addition, the sandwich construction permits the integration of a safety mattress (optional) of 2 to 5 cm height. The system is suitable for patients from 20 kg up to 200 kg.

PRODUCT HIGHLIGHTS:

- touch pad panel with automatic keylock
- care function
- 5 heel cells with quick release connectors and self-closing valves
- long service intervals
- low noise level



Smartline Hybrid

The Smartline Hybrid is a flexible mattress replacement system which combines the benefits of high specification foam technology and sensor-controlled air pumps.

It is suitable for the prevention and treatment of pressure ulcers up to grade IV (according to EPUAP) and has been specifically designed for patients who are considered to have a very high risk of developing pressure ulcer. In addition, it offers a dynamic therapy support mode. This unique system provides a high degree of patient comfort and when clinically required, can be „upgraded“ into a dynamic mattress system by simply connecting a sensor controlled digital pump. Similarly, mattress function can be „downgraded“ as the patient’s condition improves in line with their clinical needs. Embedded in the „U“ -shaped foam base frame are 14 polyurethane air cells with cold foam inserts. The cover is made of multi way stretch PU which is vapour permeable, incorporates high frequency welded seams and has a zip protection flap which makes it conform to the strictest infection policies. Between the cover and cells is a quilted layer comprising of siliconized hollow fibres. The head and foot segments are made of a high quality RG70 cold foam to optimally reduce and redistribute pressure in these vulnerable areas. A higher maximum weight capacity of up to 200 kg also allows the product to meet the needs of plus size patients.

Carry straps



„U“ shaped foam base frame
 Cell core
 Layer of hollow fiber
 PU-Cover

TECHNICAL SPECIFICATIONS



PRESSURE ULCER GRADE: ● I ● II ● III ● IV
MAX. PATIENT WEIGHT: 200 KG

ITEM NO.:	996650
CONTROL UNIT:	
Measurements:	28 x 16 x 10 cm
Weight:	1,7 kg
Air output:	8,5 – 9 l./min, LED-Weight Settings 230 V/50 Hz
Pressure range:	20 – 55 mmHg, pressure sensor inside
Cycle time:	10 min
MATTRESS OVERLAY:	
Measurements:	200 x 90 x 16 cm
Weight:	18 kg
MATERIAL:	
Air cells:	14 cells Head and foot section: Cold foam RG 70
Cover:	bi-elastic PU coated, breathable, slip-retardant & water repellent
Base:	nylon/PVC
ALARM FUNCTIONS:	
	<ul style="list-style-type: none"> Low pressure (visual and audible) Power failure (visual and audible)



Integrated evacuation belts on the base

APM 440 XC

TECHNICAL SPECIFICATIONS



ITEM NO.: 991500XC

CONTROL UNIT:

Measurements: 39 x 21 x 12 cm
 Weight: 5 kg
 2 membrane compressors, digital control with pressure sensor, alternating pressure, static mode (CLP), care mode, 3 time cycles (5/10/15 min.), automatic key lock function after 3 min., set-up memory function

MATTRESS OVERLAY:

Measurements: 200 x 88 x 20 cm
 Weight: ca. 10,5 kg
 20 cells, 7 slim heel cells, all cells with self-closing connection valves, 3 head cells static, non-bending connecting tubes (incl. transportation safety lock), CPR emergency ventilation

MATERIAL:

Cells: nylon with polyurethane coating
 Cover: bi-elastic PU/PES, breathable, slip-retardant

PRESSURE ULCER GRADE: ● I ● II ● III ● IV

MAX. PATIENT WEIGHT: 230 KG

ALARM FUNCTIONS:

- low pressure and cycle change alarms (visual and audible)
- power failure alarm (audible)

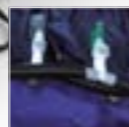
Our latest upgraded version of the successful APM440 Series, the XC with Cell-On-Cell system, an effective solution for the prevention and treatment of pressure ulcers. The APM440 XC is a mattress replacement system which is designed for use in care, nursing and hospital environments.

PRODUCT HIGHLIGHTS:

- Digital sensors react to the patients body mass and movement providing optimal support pressure
- 20 air cells, all of which can be decoupled to provide pressure free zones
- Ideal for prone positioning in cases of (ARDS) Acute Respiratory Distress Syndrome with COVID-19 patients
- Active Mattress adjustment through a touch pad interface
- Automatic key lock
- Alternating pressure, CLP and care modes
- 3 alternating time cycles giving a choice of 5/10/15 min
- Twin membrane pumps for quick inflation
- Permanently inflated base cells to avoid bottoming out
- 7 narrow heel cells and the 3 head cells provide a pillow function
- Non-bending connecting tubes with transportation safety lock
- Self-closing connection valves
- CPR emergency ventilation
- Cable management system



With 7 extra slim heel cells



Quick release, self-closing one-way valves on all cells



Transport bag, included as standard in the scope of delivery

Ideally matched beds to your Novacare system

This may also interest you!

Hospital bed Evario



▲ The Evario from Stieglmeyer is suitable for all wards thanks to its intelligent modular system. Different safety side systems, castors as well as head and footboards can be combined to create a functionally and aesthetically flexible hospital bed. For the intermediate care unit, it offers an optional scale, many attachment options for accessories, operation via foot switch, etc..

ICU bed Sicuro tera



◀ Sicuro tera is the bed for demanding intensive care. The lateral tilting capability helps with pressure ulcer prophylaxis and supports the nursing staff during patient transfer or mobilisation. The bed features numerous attachment options for accessories and an optional scale.

Care bed Elvido



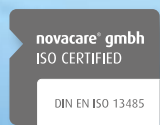
▲ Comfortable, modular, digital - in our Elvido series every care bed is a customised dream bed. Heavy-duty beds, mechanical variants or particularly mobile models can be used in every ward up to and including psychiatric wards.

Care bed Libra



▲ Freedom and flexibility are the strengths of the Libra. It offers people in need of care protection and comfort and at the same time promotes their mobility. With the Libra partner double bed, couples can sleep together or separately as they wish.

CE



Manufacturer/Distributor:

novacare® gmbh

Bruchstraße 48 · 67098 Bad Dürkheim
Tel. +49 (0) 6322 9565-0 · Fax +49 (0) 6322 9565-65
info@novacare.de · www.novacare.org



Vertrieb:

Stieglmeyer GmbH & Co. KG

Ackerstraße 42 · 32051 Herford
Tel. +49 (0) 5221 185 - 0 · Fax +49 (0) 5221 185 - 252
info@stieglmeyer.com · www.stieglmeyer.com

STIEGELMEYERGROUP