

# Accessories



Clinic | **Care** | Homecare | Assist

## Original accessories for added comfort and safety







## Contents



04 Fall prevention



16 Safe manoeuvrability



06 Bed extensions



18 Medical care



10 Protective covers



20 Transport, operation and better safety



12 Patient lifting pole



22 Space-saving accessories



14 Lamps



JASPER JOHNS  
PRINTS · 1960 · 1970  
PHILADELPHIA MUSEUM OF ART  
APRIL 15 · JUNE 14 · 1970



**More protection**  
without restraint  
measures

## Fall prevention

When care-dependent people leave the bed, there is often a risk of falls and injury. At the same time, however, it is important that they remain mobile. With the following products, the risk can be reduced – without restricting the occupant's freedom of movement in any way.

The **fall protection mat** can be folded up quickly and stowed behind the headboard or footboard when not in use. It is made of composite foam, 3 cm thick, and is non-slip, non-tear and resistant to dirt and stains (large picture).

The **fall protection ramp** breaks the fall, converting it into a rolling movement. The ramp is made of firm foam padding encased in a PU cover (picture 1).

The **small safety mat** is fixed to the safety sides with convenient snaps (picture 2) and can also be folded up when not in use (picture 3). The mat is made of robust synthetic leather and foam padding.





## Bed extensions

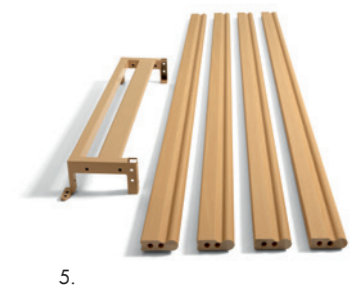
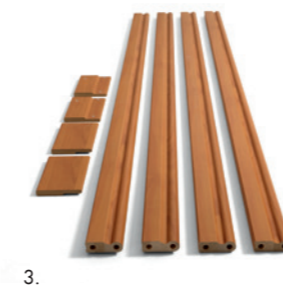
For tall residents, a bed extension provides extra space and comfort (large image). The bed extension can be readily fitted to an existing bed, in situ, by the in-house technician or a service technician.

There are two options for extending the mattress base. The first option is the extension of the **lower leg rest** by 20 cm, which can be inserted without tools and is available for beds of the Elvido and Venta family (image 1). When adjusting the mattress base, this element also moves, so that, for example, orthopaedic

positioning with a raised lower leg rest is made possible (image 2). For extension of the mattress, additional mattress pieces of various heights can be selected. A 220 cm long mattress is also available.

The second option for extension of the mattress base is a **mattress piece**, which is inserted into the bed frame with means of a mounting fixture (image 3 and 4). This mattress piece stays in position when the lower leg rest is adjusted.





## More room for tall occupants

The **Elvido models** are equipped with a pull-out extension section **as standard** (with the exception of the Elvido rega model). If this bed extension is used, the side bars must be replaced and special trim elements added with the help of a side extension set. Once installed, the extension blends seamlessly into the overall design of the bed (picture 1).

For an extra charge, the Elvido models can be equipped with an **integrated bed extension** with

telescopic side bars and trims (with the exception of the Elvido rega model). Once the locking bolt has been released, the extension can be pulled out with ease. With the integrated extension, no retrofitting or additional components are required (large picture).

The bed extensions are also available for retrofitting on many other bed models (see table). They can be configured when placing the order or fitted later at the place of use.

## Overview

Scope of supply for care bed model	Illustration	4 safety side bars	2 trim sections	1 bed extension section	1 mattress extension
Elvido with telescopic bed extension (except for the Elvido rega)	(large picture)				x
Elvido (except Elvido rega)	Picture 3	x	x		x
Elvido rega	Picture 5	x		x	x
Classiko	Picture 5	x		x	x
Amara and Faro	Picture 4	x	x	x	x
Pareno	Picture 4	x	x	x	x
Arena	No picture	x	x	x	x





## Protective covers

Our protective covers serve a number of purposes. They prevent residents from injuring themselves on the sides, head and foot of the bed. And they also protect the bed from damage.

Thanks to the combination of materials, the covers are easy to clean and soft to the touch. The upper material is made of synthetic leather and is lined with foam. All of the materials, including the PU filling, can be fully **disinfected**.

The upholstered covers are available in **different versions for the head and footboard** and for full-length, split and increased-height safety side systems (images 1 and 3). They can be used individu-

ally or combined to provide complete protection on all sides (large image).

Quick to remove are the form-cut **protective safety side covers** which have a removable outer cover made of PU. They can be used with split and full-length safety sides (image 2). For protection along the entire side of the bed, 2 upholstered covers are needed.

In the Venta family, an **extension cushion** offers gapless comfort and allows the resident to stand up even more comfortably (image 4). If the bed is used with raised safety sides that are not pulled out, the extension cushion can be placed onto the free section of the long side.

**Customised protection**  
for special requirements





## Patient lifting pole

The aids described in this section are aimed at assisting the occupant to sit up in bed independently.

The cylindrical lifting pole can be fitted into the lifting pole sleeves at the head end of the bed, either on the right-hand or left-hand side, as required (picture 1). Two pins on the arm of the lifting pole prevent the grab handle from slipping off. The **basic grab handle** with synthetic belt has finger recesses to ensure a firm grip when pulling up into a sitting position (picture 2). The **soft-touch grab handle** has been optimised for extra comfort, with a pleasantly soft surface and two different gripping heights (picture 3). The height can also be adjusted as required by pulling down on the belt while pressing a release button.

The **cable holders** help to keep cables and supply lines safely positioned during day-to-day use (large picture). They simply clip onto the cylindrical patient lifting pole. The cables can then be laid close to the pole for better protection from damage. If the cable is pulled, the holders will unclip automatically to prevent the cable from tearing.

IV bags can be attached using an **infusion holder** that fits on the lifting pole arm (picture 4).

The **rope ladder** that affixes to the foot end of the bed allows the occupant to sit up independently without using a patient lifting pole (picture 5).





## Lamps

The lamps provide pleasant, cosy lighting for the occupants – without disturbing others in the room. The lamps can be fitted at the head end using the sleeves for patient lifting poles. The integrated locking adapter prevents any unintended rotation of the lamp arm (picture 3). This helps prevent damage to the light and the wall.

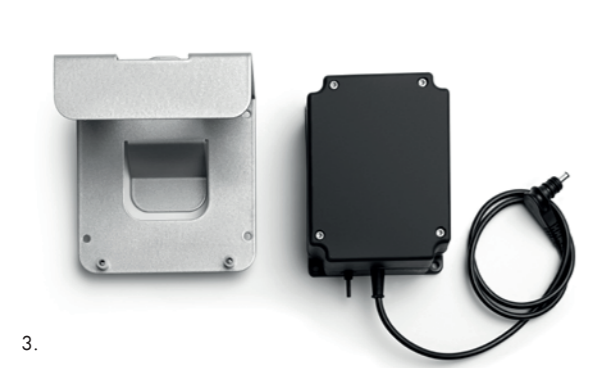
Both LED and halogen models of the **Sola** reading lamp are available (picture 1). The lamp head in both cases is made of shatterproof plastic. The light quality is excellent and ventilation slots and heat dissipation cylinders prevents heat build up.

The **Stella** LED reading lamp combines an elegant design and a long service life (large picture). The lamp

head is made of highly polished stainless steel and provides night-time orientation lighting. The lamp can be powered via either a mains plug transformer or a direct connection to the bed controls. This allows the lamp to be used in conjunction with the Out-of-Bed function in Stieglmeyer's e-help system.

The Sola and Stella lamps have a long, flexible arm and convenient switch on the lamp head for easy operation. The Sola lamp can also be supplied with a cable switch (picture 4). Both lamps are available as table lamp models to be fitted on a bedside locker, making them particularly versatile (picture 2).





Our customer service can help you select the right wall spacer

## Safe manoeuvring

Special accessories are available to prevent damage to beds and their surroundings should beds be moved around during day to day use.

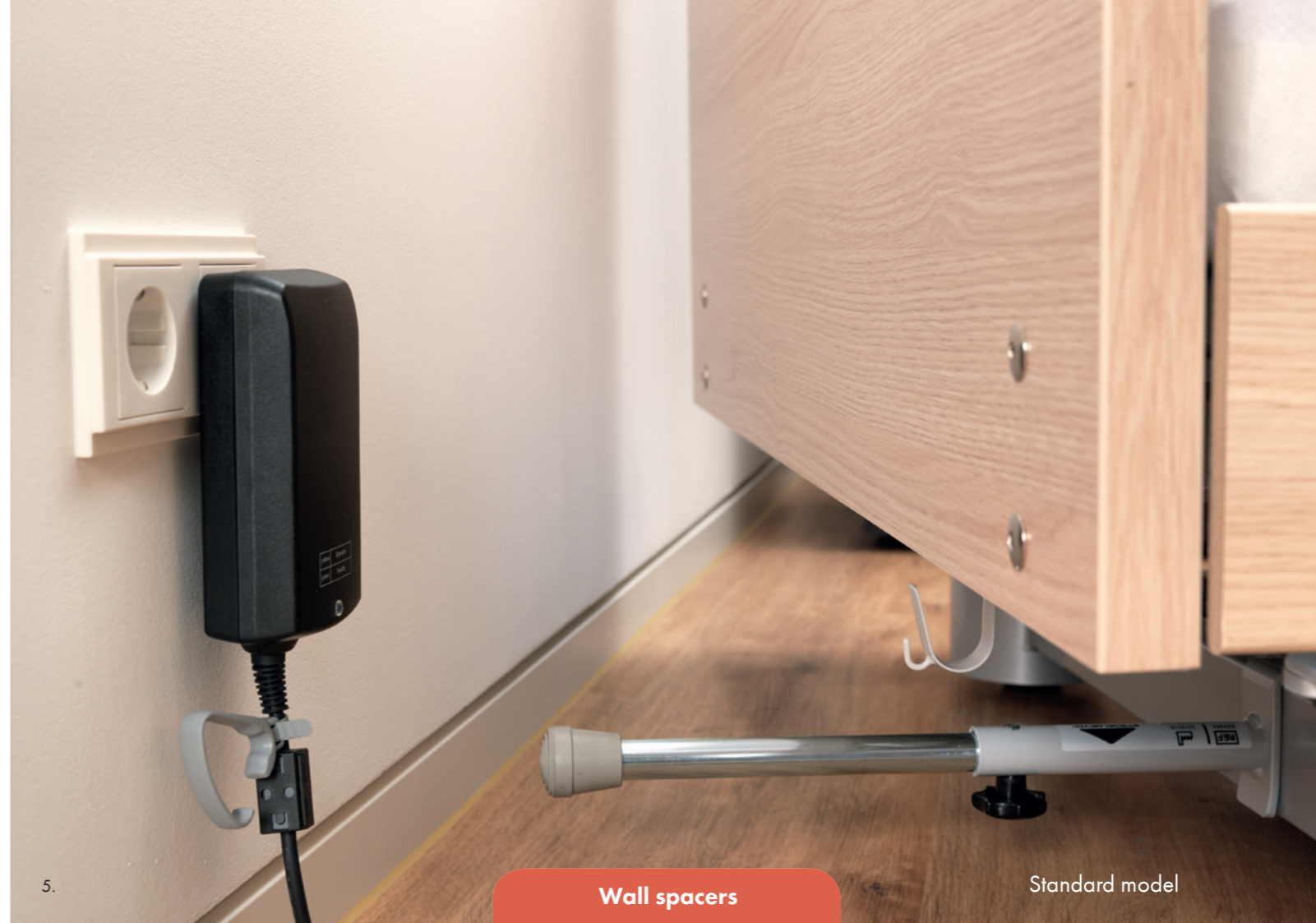
The **wall protection rollers** provide collision protection. These minimise the damage caused to walls on horizontal impact (picture 1). The version with integrated plastic rollers also protects the wall when the bed height is being adjusted (picture 2).

The low-voltage rechargeable battery allows bed adjustments to be made during a power cut – an optional extra for the Elvido and Venta models (picture 3). When connected, the battery will be automatically charged by the control unit. The battery is available as a set with a special holder and can be fixed onto

either the headboard or footboard, or onto the safety side bars (picture 4).

The **wall spacers** protect walls, fittings and power sockets (pictures 5 and 6). They simply clip onto the longitudinal or transverse supports, without the need for any tools. The alternative version with disc-shaped buffers is specially designed for lightweight walls.

There is also the option of operating the bed via a safe extra-low voltage of **24 volts**, using a separate transformer plug. This ensures that there is no 230 volt mains voltage in the bed area. Leakage current measurements for the energy-saving 24-volt system only need to be taken once every ten years.



**Wall spacers**

- Wall spacers prevent collision damage when manoeuvring the bed
- Many different models to choose from
- Buffer absorbs the shock (top picture)
- Optional discs distribute the pressure even more uniformly – ideal for lightweight wall constructions (bottom picture)
- Dimensions to suit your bed

Standard model

Model for lightweight walls





## Medical care

Medical aids need to be within easy reach around the bed during everyday care. Our accessories allow these aids to be fixed easily to the care bed, close to the occupant.

In the case of Elvido models that are equipped with a supply rail (optional), the **universal holder** for standard drainage bags can simply be inserted into the fixing bracket (picture 1).

The **urine bag holder** hooks over the lower bar of the safety sides. It also creates a gap between the safety side bars to allow drainage tubes to pass through (picture 2).

The **urine bottle holder** fits onto the side of the safety side bars and holds the urine bottle securely in place (picture 3).

Two different models of the **infusion stand** are available: **straight** (picture 4) and **angled** (large picture). Both options of the infusion stands can be inserted into the lifting pole sleeves using plastic adapter sleeves. The straight infusion stand is height adjustable and each hook can support a weight of 2 kg. The angled infusion stand is bent at 45 degrees to prevent damage to walls when the mattress base is tilted, in the Trendelenburg position.





## Transport, operation and better safety

With practical solutions from Stiegmeyer, simpler and more convenient day-to-day care becomes a reality for occupants, care personnel and service technicians.

The **bed transporter** is used to transport and store beds and also for maintenance and repairs. The transporter can be used with all beds that have a fixed wooden surround. Each of its large castors can be swivelled and locked individually (large picture and picture 1).

If a thicker mattress is used, the occupant's safety can be improved by adding an **attachable bar** in order to increase the height of the safety sides by approximately 14.5 cm (picture 1). An eccentric fitting ensures compatibility with various types of safety side bars. The **transmitter clip** for the handset allows the handset to be fixed to the upper bar of the safety sides (picture 3). This makes it possible to keep the handset within easy reach of the occupant (for bars with a handle).





## Space-saving accessories

Various accessories are available for ensuring personal belongings are kept within the vicinity of the occupant, while keeping them neatly stowed away and saving space.

The **tray** is placed on top of the raised safety sides (large picture). Stops on the underside of the tray prevent it from slipping off. When not in use, the tray can be suspended from the headboard.

The **magazine rack** offers ample space for storing the occupant's documents or magazines (picture 1). It can be attached to the bed or the bedside locker.

The self-adhesive **label frame** made of aluminium makes it easy to remove and insert name labels (picture 2).

The **device rack** hooks onto the headboard or footboard and can be used to attach compressors for anti-decubitus systems. It also provides space for blankets and towels (picture 3).

The practical **writing table** can be used wherever required. It is easy to adjust to the right position and can be folded away. Documents are held in place by the document clip and by the aluminium protection strips at the edges (picture 4).

The **crutch holder** can be freely positioned and fixed with a suction pad. An locking system makes it particularly easy to fix the holder to the bed or bedside locker and remove it again as required (picture 5).



Ihr Bett – unsere Leidenschaft  
Your bed – our passion

#### **Finland / Suomi**

Stiegelmeyer Oy  
Ahjokatu 4 A  
15800 Lahti  
Phone +358 (0) 3 7536 - 320  
Fax +358 (0) 3 7536 - 330  
E-Mail [stiegelmeyer@stiegelmeyer.fi](mailto:stiegelmeyer@stiegelmeyer.fi)  
[finland.stiegelmeyer.com](http://finland.stiegelmeyer.com)

#### **Netherlands / Nederland**

Stiegelmeyer BV  
Peppelenbos 7  
6662 WB Elst  
Phone +31 (0) 345 581 - 881  
E-Mail [info@stiegelmeyer.nl](mailto:info@stiegelmeyer.nl)  
[netherlands.stiegelmeyer.com](http://netherlands.stiegelmeyer.com)

#### **Poland / Polska**

Stiegelmeyer Sp. z o.o.  
86-212 Stolno, Grubno 63  
Phone +48 56 6771 - 400  
Fax +48 56 6771 - 410  
E-Mail [info.stolno@stiegelmeyer.pl](mailto:info.stolno@stiegelmeyer.pl)  
[poland.stiegelmeyer.com](http://poland.stiegelmeyer.com)

#### **France**

Stiegelmeyer SAS  
Bâtiment B  
27 chemin des Peupliers  
69570 Dardilly  
Phone +33 (0) 4 7238 - 5336  
Fax +33 (0) 4 7238 - 5481  
E-Mail [contact@stiegelmeyer.fr](mailto:contact@stiegelmeyer.fr)  
[france.stiegelmeyer.com](http://france.stiegelmeyer.com)

#### **South Africa**

Stiegelmeyer Africa (PTY) Ltd  
The Estuaries, Century City, Cape Town, 7441  
Phone +27 (0) 21 555 - 1415  
Fax +27 (0) 21 555 - 0639  
E-Mail [info.southafrica@stiegelmeyer.com](mailto:info.southafrica@stiegelmeyer.com)  
[south-africa.stiegelmeyer.com](http://south-africa.stiegelmeyer.com)

#### **Stiegelmeyer GmbH & Co. KG**

Ackerstraße 42, 32051 Herford, Germany  
Phone +49 (0) 5221 185 - 0  
Fax +49 (0) 5221 185 - 252  
E-Mail [info@stiegelmeyer.com](mailto:info@stiegelmeyer.com)  
[www.stiegelmeyer.com](http://www.stiegelmeyer.com)

  
**STIEGELMEYER**

Finden Sie Ihren Händler auf unserer Webseite:  
Find your local partner at our website:  
[stiegelmeyer.com/partner](http://stiegelmeyer.com/partner)

Technische Änderungen vorbehalten. Leichte Farbabweichungen der Originale sind drucktechnisch bedingt. Stand 11/2017. Version 4. Artikel-Nr. 600730.  
Subject to technical changes without notice. The shown product colours may differ slightly from the actual product. Last updated 11/2017. Version 4. Item no. 600730.